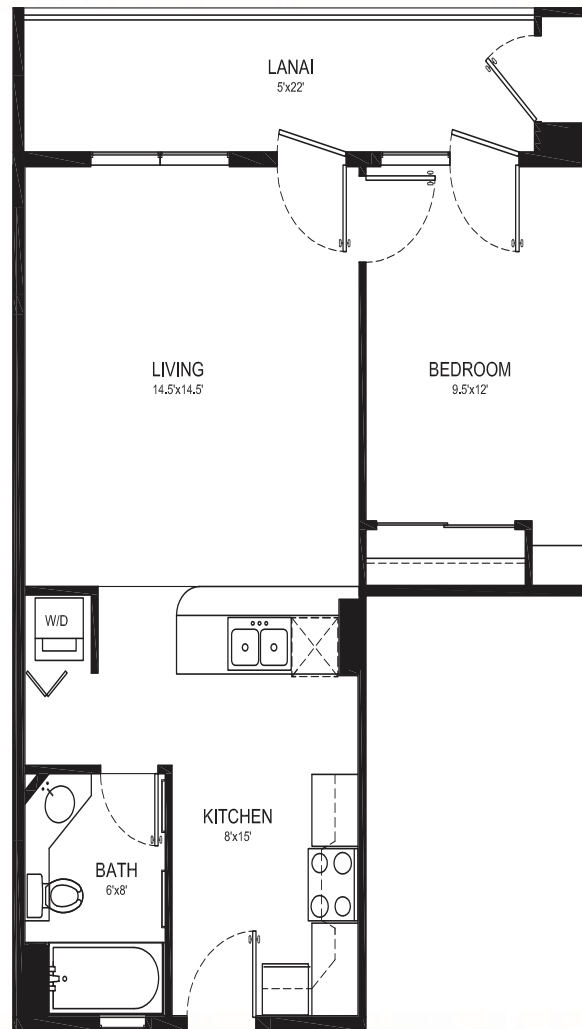


# THE BREAKERS

*Something for every lifestyle*

## TYPE A - 1 BEDROOM 1 BATH

707 Total Square Feet ~ 584 sq. ft Living Area ~ 123 sq. ft. Lanai



THE BREAKERS • 3702 LOWER HONOAPIILANI, LAHAINA, MAUI, HAWAII 96761 • PHONE: (808) 283-0805 • SALES@THEBREAKERSMAUI.COM  
PRUDENTIAL LOCATIONS MAUI LLC • 151 E. WAKEA AVENUE, STE. 204, KAHULUI, HAWAII 96732 • PHONE: (808) 872-2462

All floor plans and exterior renderings are artist's conceptions. Floor plans, exteriors and standard features may vary depending on the elevations and options selected. Room dimensions are approximate. We reserve the right to modify all plans and specifications without notice or obligation. ©Copyright 2008. No reproductions or other use of these plans may be made without the expressed written consent of the copyright holder 4.16.08

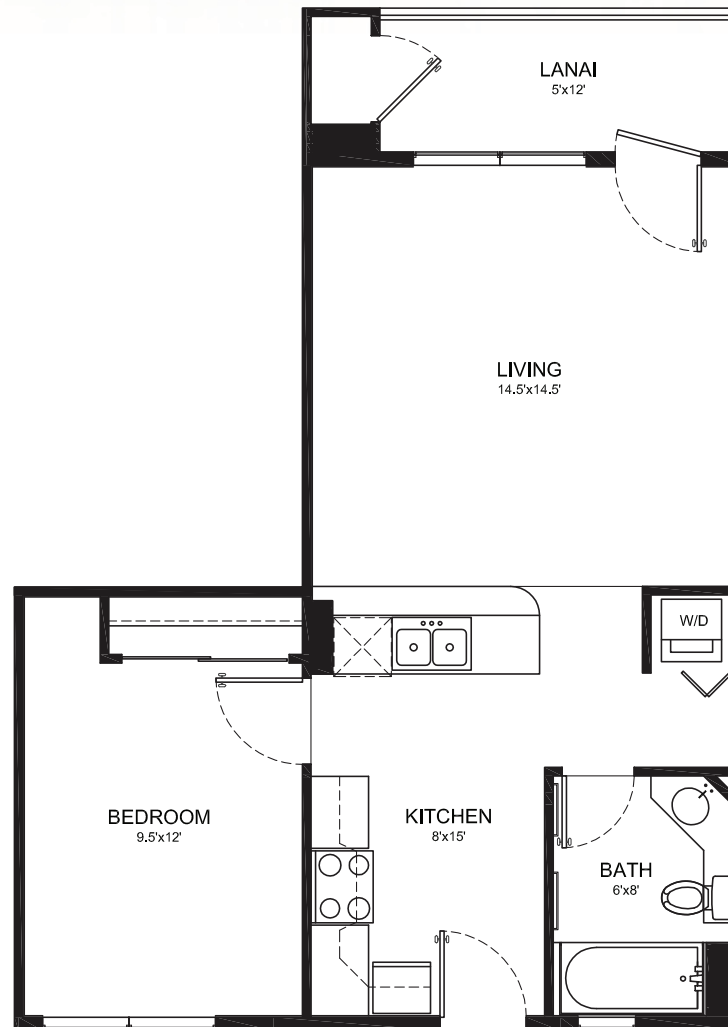


# THE BREAKERS

*Something for every lifestyle*

## TYPE B - 1 BEDROOM 1 BATH

652 Total Square Feet ~ 578 sq. ft Living Area ~ 74 sq. ft. Lanai



THE BREAKERS • 3702 LOWER HONOAPIILANI, LAHAINA, MAUI, HAWAII 96761 • PHONE: (808) 283-0805 • SALES@THEBREAKERSMAUI.COM  
PRUDENTIAL LOCATIONS MAUI LLC • 151 E. WAKEA AVENUE, STE. 204, KAHULUI, HAWAII 96732 • PHONE: (808) 872-2462

All floor plans and exterior renderings are artist's conceptions. Floor plans, exteriors and standard features may vary depending on the elevations and options selected. Room dimensions are approximate. We reserve the right to modify all plans and specifications without notice or obligation. ©Copyright 2008. No reproductions or other use of these plans may be made without the expressed written consent of the copyright holder 4.16.08

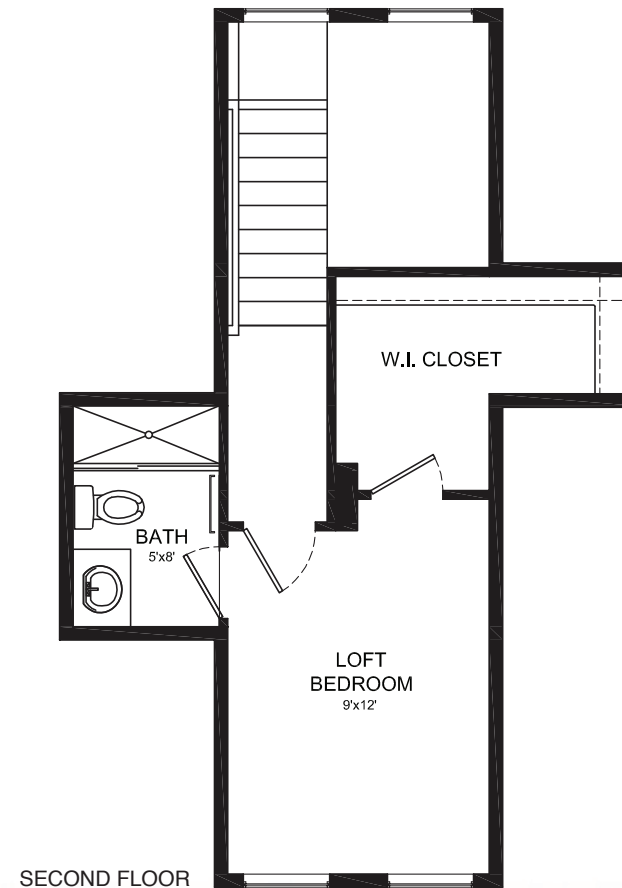
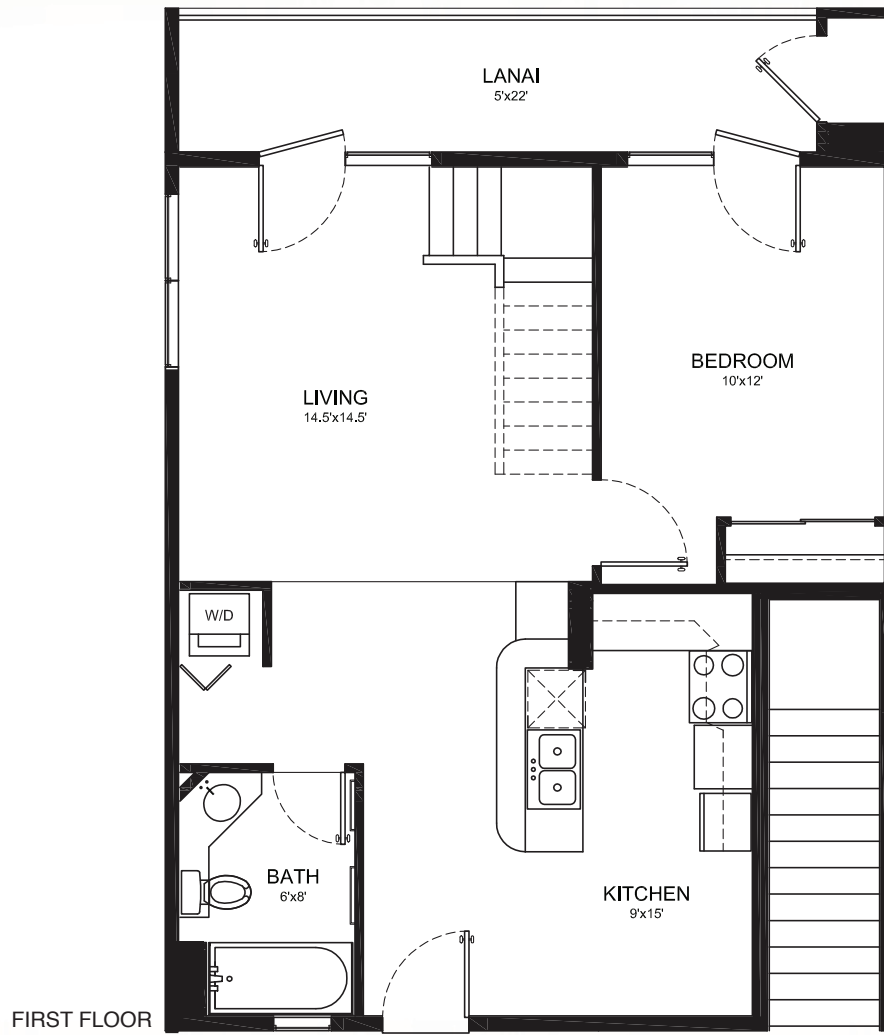


# THE BREAKERS

*Something for every lifestyle*

## TYPE G - 2 BEDROOM 2 BATH, LOFT

1026 Total Square Feet ~ 903 sq. ft Living Area ~ 123 sq. ft. Lanai



THE BREAKERS • 3702 LOWER HONOAPIILANI, LAHAINA, MAUI, HAWAII 96761 • PHONE: (808) 283-0805 • SALES@THEBREAKERSMAUI.COM  
PRUDENTIAL LOCATIONS MAUI LLC • 151 E. WAKEA AVENUE, STE. 204, KAHULUI, HAWAII 96732 • PHONE: (808) 872-2462

All floor plans and exterior renderings are artist's conceptions. Floor plans, exteriors and standard features may vary depending on the elevations and options selected. Room dimensions are approximate. We reserve the right to modify all plans and specifications without notice or obligation. ©Copyright 2008. No reproductions or other use of these plans may be made without the expressed written consent of the copyright holder 4.16.08

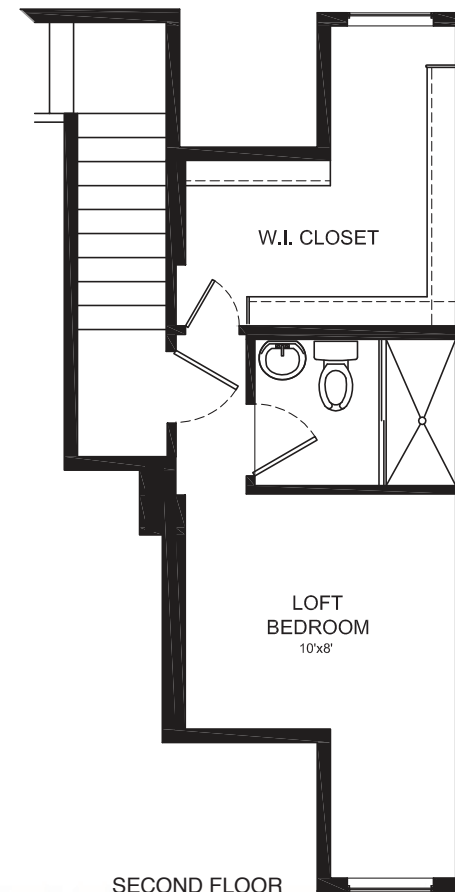
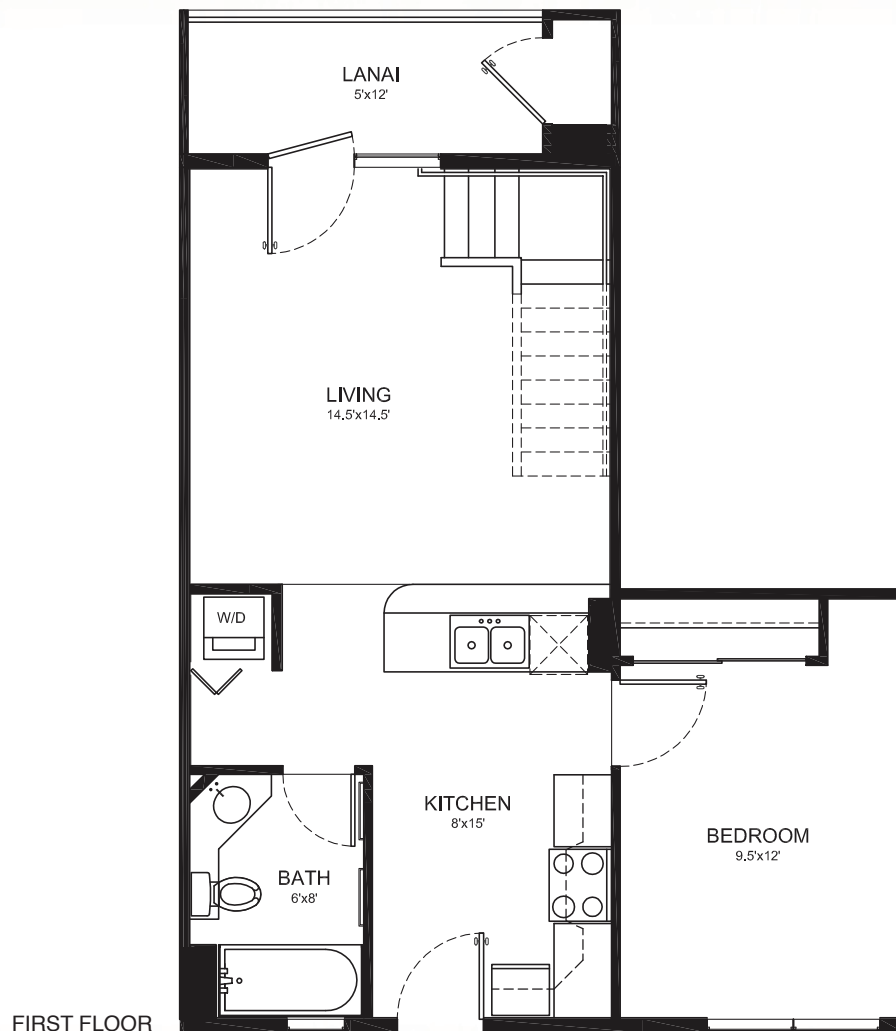


# THE BREAKERS

*Something for every lifestyle*

**TYPE H - 1 BEDROOM 2 BATH, LOFT**

899 Total Square Feet ~ 825 sq. ft Living Area ~ 74 sq. ft. Lanai



THE BREAKERS • 3702 LOWER HONOAPIILANI, LAHAINA, MAUI, HAWAII 96761 • PHONE: (808) 283-0805 • SALES@THEBREAKERSMAUI.COM  
PRUDENTIAL LOCATIONS MAUI LLC • 151 E. WAKEA AVENUE, STE. 204, KAHULUI, HAWAII 96732 • PHONE: (808) 872-2462

All floor plans and exterior renderings are artist's conceptions. Floor plans, exteriors and standard features may vary depending on the elevations and options selected. Room dimensions are approximate. We reserve the right to modify all plans and specifications without notice or obligation. ©Copyright 2008. No reproductions or other use of these plans may be made without the expressed written consent of the copyright holder 4.16.08

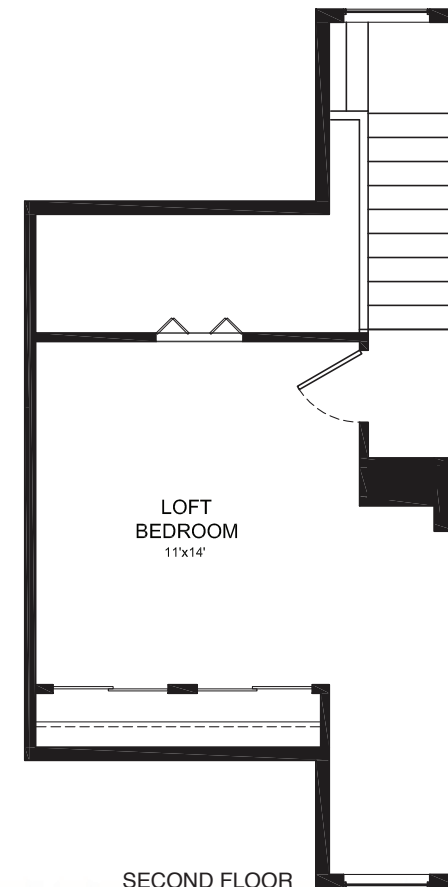
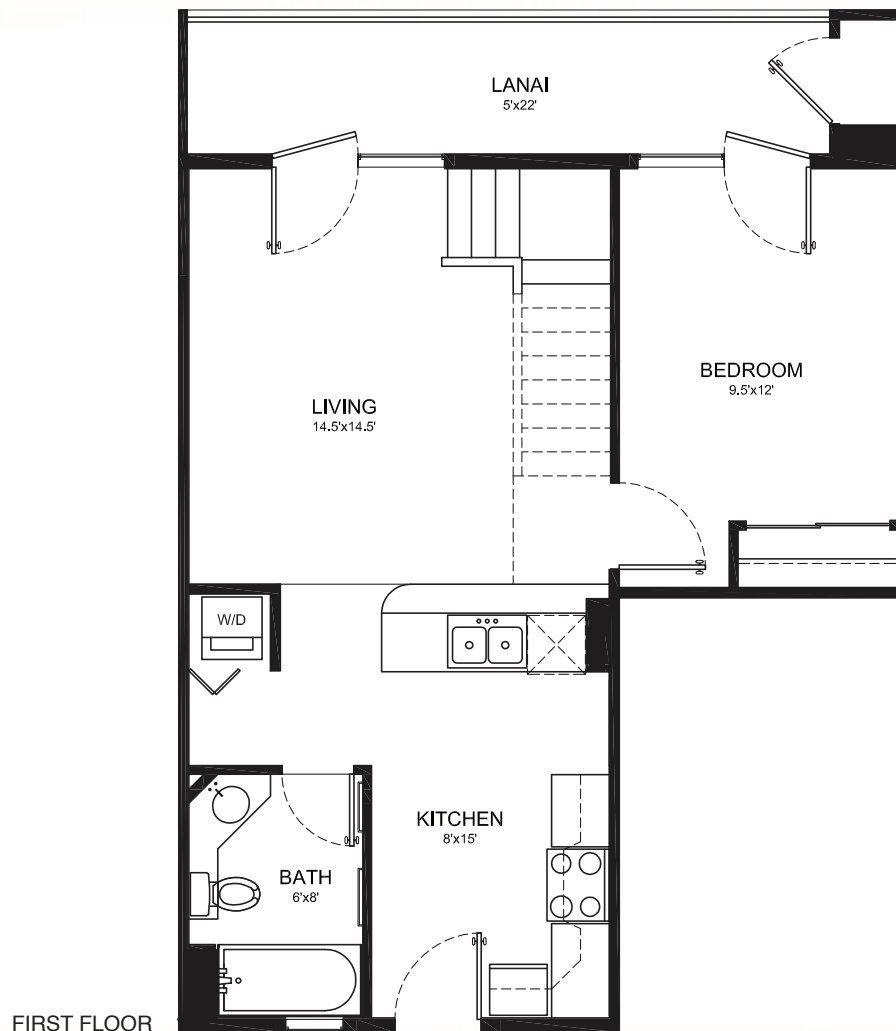


# THE BREAKERS

*Something for every lifestyle*

## TYPE J - 2 BEDROOM 1 BATH

932 Total Square Feet ~ 809 sq. ft Living Area ~ 123 sq. ft. Lanai



THE BREAKERS • 3702 LOWER HONOAPIILANI, LAHAINA, MAUI, HAWAII 96761 • PHONE: (808) 283-0805 • SALES@THEBREAKERSMAUI.COM  
PRUDENTIAL LOCATIONS MAUI LLC • 151 E. WAKEA AVENUE, STE. 204, KAHULUI, HAWAII 96732 • PHONE: (808) 872-2462

All floor plans and exterior renderings are artist's conceptions. Floor plans, exteriors and standard features may vary depending on the elevations and options selected. Room dimensions are approximate. We reserve the right to modify all plans and specifications without notice or obligation. ©Copyright 2008. No reproductions or other use of these plans may be made without the expressed written consent of the copyright holder 4.16.08

